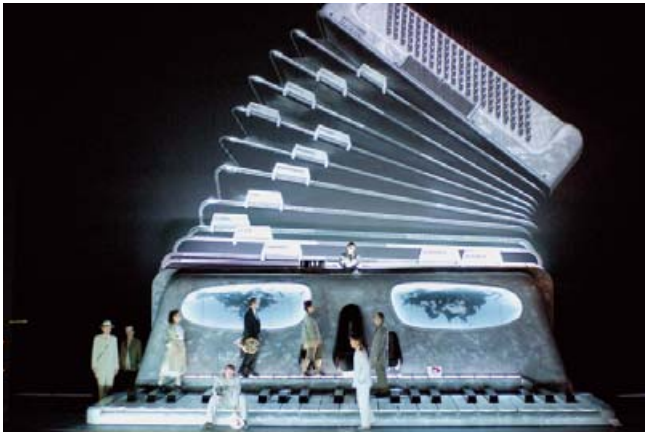




1



2



3

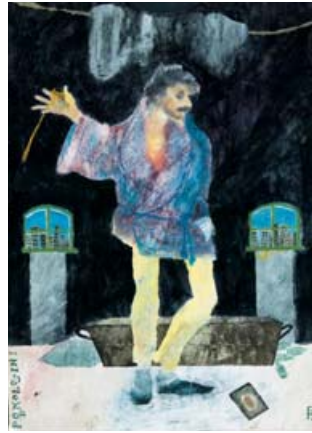
1/ *Julietta*, National Theatre in Prague, 1938, photo of the production
 2/ *Julietta*, National Theatre in Prague, 2000, photo of the production
 3/ *Julietta*, Palais Garnier in Paris, 2002, set design by Antony McDonald, photo of the production



1



2



3



4



1/ *Échec au roi* (Check to the King), State Theater in Brno, 1980, photo of the production
 2/ *Voják a tanečnice* (The soldier and the Dancer), costume design by Bohumil Babánek for The Star
 3/ *The Marriage*, production planned for 2009, costume design by Pamela Howard for Podkolyosin.
 4/ *The Greek Passion*, Festspielhaus in Bregenz, Austria, 1999, photo of the production

The Martinů Phenomenon

Martinů

Prepared for the Ministry of Foreign Affairs of the Czech Republic by the National Museum – Czech Museum of Music, Prague



NATIONAL MUSEUM
 CZECH REPUBLIC
 www.nm.cz

An Exhibition

A UNESCO cultural anniversary for 2009 – 2010

THE MARTINŮ PHENOMENON is an exhibition offering a comprehensive view of an exceptional figure in international music history. The Czech composer Bohuslav Martinů (1890-1959) was one of the important representatives of the musical avant-garde in the twentieth century. On the occasion of the fiftieth anniversary of his death, the National Museum – Czech Museum of Music (Prague) has prepared an exhibition featuring a wide selection of exhibit items from the spheres of music, visual arts, and theatre. This dynamically-conceived exposition rests on two pillars: on the one hand the composer's highly interesting life and phenomenal works, and on the other stagings of his theatrical works in both his own time and our own. The exhibition presents interesting archival and photographic material, musical works, and works of visual art including designs for sets and costumes. The Martinů anniversary has been adopted by UNESCO as one of its themes for the period 2009-10.



1



2



3

1/ Church of St. James (svatý Jakub) in Polička
2/ The room where Martinů was born.
3/ The National Theatre in Prague, Neo-Renaissance building completed 1883



1



2



3



4

1/ Martinů in 1893, photo by J. Klesl of Plička
2/ Martinů ca. 1905-06, photo from Atelier Elite of Prague
3/ Martinů with violin, 1912, photo by J. Leeder of Plička
4/ Martinů in the studio of Jan Zrzavý, Paris, 1924



1



2



3

1/ Martinů by a Boston Symphony Orchestra poster during the 1945-46 season. The orchestra was conducted by Serge Koussevitzky.
2/ Martinů in Nice, 1959
3/ Martinů in Schönenberg, ca. 1957-58

Period panoramic photo of Polička and environs



THIS EXHIBITION IS PART OF THE PROJECT:



PRESENTED IN COOPERATION WITH:



WITH SUPPORT FROM:

